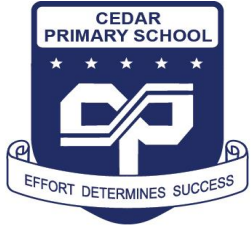




Cedar Primary School P5 & P6 Parent Engagement Webinar 2023

10 March 2023



P5 and P6 Parent Engagement Webinar

10 Mar 2023

School Values: Kindness, Integrity, Resilience, Responsibility, Creativity

Scope of Presentation

- Our CPS Team
- Our Vision, Mission, Values and Motto
- Changes to the PSLE Scoring and S1 Posting Systems
- Understanding the P5 - P6 child
- Building your child's Resilience
- Preparing for PSLE



Our School Vision, Mission, Values and Motto



School Motto

Effort Determines Success

School Vision

School Mission

Nurturing Minds.
Inspiring Hearts.
Empowering Lives.

WHY

Social
Emotional
Competencies

21st
Century
Competencies

WHAT



School Values

Kindness
Integrity
Resilience
Responsibility
Creativity

WHO

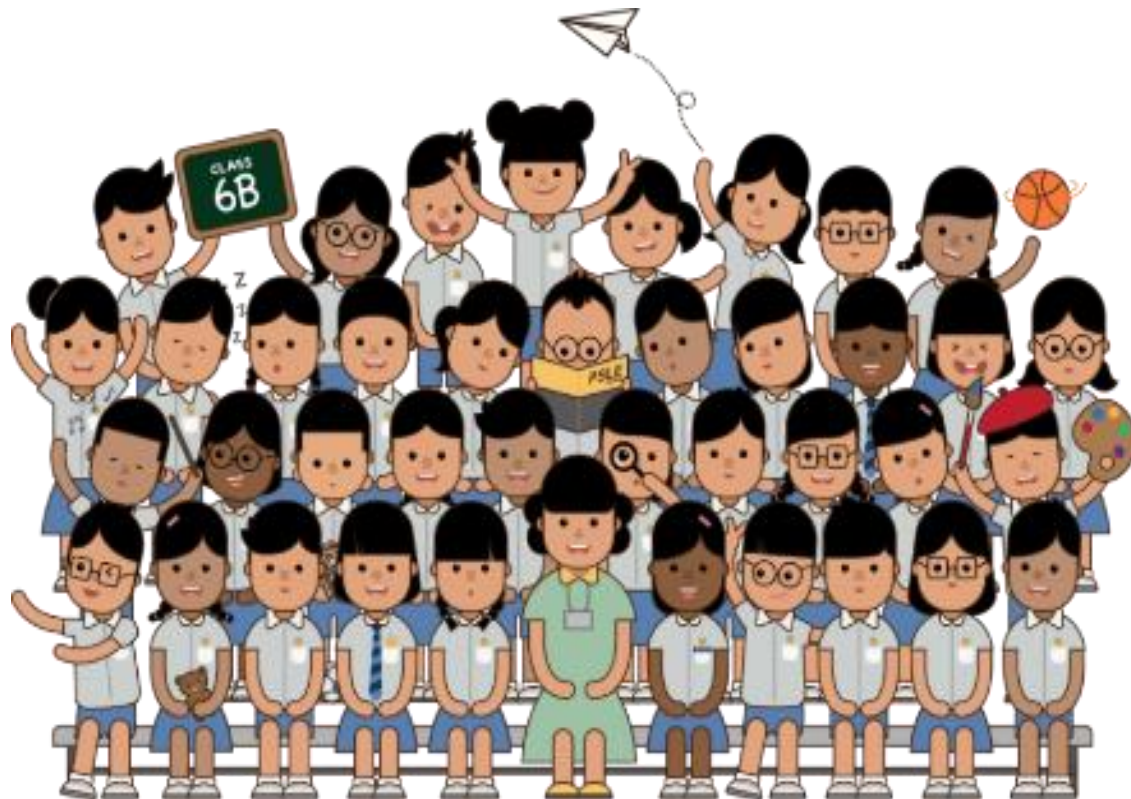
Respect
Resilience
Responsibility

Integrity
Care
Harmony

MOE CCE Values

CHANGES TO THE PSLE SCORING AND S1 POSTING SYSTEMS

SUPPORTING STUDENTS AND PARENTS IN MAKING INFORMED SCHOOL CHOICES FOR PSLE



OVERVIEW

RECAP

- How the PSLE Scoring System Works
- How the S1 Posting System Works

SUPPORTING STUDENTS AND THEIR PARENTS IN MAKING INFORMED SCHOOL CHOICES

- Understanding the PSLE Score Ranges
- School Choice Journey



WHAT IS THE INTENT OF THE PSLE?



A useful checkpoint at the end of primary school

A fair way to determine secondary school posting



Over the years, we have been changing the education system to help our students discover and develop their strengths and interests, while moving away from an over-emphasis on academic results. Our PSLE Scoring changes reduce an over-emphasis on academic results by:

1

Reducing fine differentiation of students' examination results at a young age.

2

Recognising a student's level of achievement, regardless of how his/her peers have done.

3

Encouraging families to choose secondary schools holistically based on students' strengths, interests and abilities.

HOW THE PSLE SCORING SYSTEM WORKS



FROM T-SCORE TO SCORING BANDS

a) Reduces fine differentiation of students' examination results at a young age

- Students with similar scores in each subject are grouped into wider scoring bands measured in 8 ALs.

b) Reflects a student's individual level of achievement

- Students' ALs for each subject reflect their level of achievement, rather than how they have performed relative to their peers.

AL	RAW MARK RANGE
1	≥ 90
2	85 – 89
3	80 – 84
4	75 – 79
5	65 – 74
6	45 – 64
7	20 – 44
8	< 20

GRADING OF FOUNDATION SUBJECT GRADES

- Foundation subject grades are graded in scoring bands from **AL A to C**.
- To derive a student's overall PSLE Score for S1 Posting, AL A to AL C for Foundation level subjects are **mapped to AL 6 to AL 8 of Standard level subjects respectively**.
- Similar to the PSLE T-score system, this mapping is based on the learning and assessment load of the subjects, and informs students of how ready they are for the curriculum in secondary school.

FOUNDATION LEVEL AL	FOUNDATION RAW MARK RANGE	EQUIVALENT STANDARD LEVEL AL
A	75 – 100	6
B	30 – 74	7
C	< 30	8

4 SUBJECT ALs WILL BE ADDED TO FORM THE OVERALL PSLE SCORE

- The PSLE Score can range from 4 to 32, with 4 being the best.
- Students are posted to secondary school through three Posting Groups based on their PSLE Score – Posting Groups 1, 2, and 3. The PSLE score ranges for the three Posting Groups will be mapped from the existing N(T), N(A) and Express streams respectively.

ENGLISH LANGUAGE	AL 3
MOTHER TONGUE LANGUAGE	AL 2
MATHEMATICS	AL 1
SCIENCE	AL 2
<hr/>	
PSLE SCORE: 8	

POSTING GROUP	PSLE SCORE	SUBJECT LEVEL FOR MOST SUBJECTS
3	4 – 20	G3
2 or 3	21 – 22	G2 or G3
2	23 – 24	G2
1 or 2	25	G1 or G2
1	26 – 30, with AL 7 or better in both EL <u>and</u> MA	G1

ELIGIBILITY CRITERIA FOR HIGHER MOTHER TONGUE LANGUAGE (HMTL)

ELIGIBILITY CRITERIA FOR HMTL

(i) An overall PSLE Score of 8 or better

or

(ii) An overall PSLE Score of 9 to 14 (inclusive); and attain

- **AL 1 / AL 2 in MTL or**
- **Distinction / Merit in HMTL**

- The eligibility criteria for taking HMTL takes reference from past criteria.
- It ensures students can cope with the higher academic load.
- Secondary schools continue to have the flexibility to offer HMTL to students who do not meet the criteria if they:
 - have high ability and interest in MTL, and
 - are able to cope with the learning load required.

ELIGIBILITY CRITERIA FOR MOTHER TONGUE LANGUAGE (MTL) 'B' IN SECONDARY SCHOOLS

- The MTL 'B' curriculum is designed to help students in the Express and N(A) courses who face exceptional difficulty coping with MTL.

ELIGIBILITY CRITERIA FOR MTL 'B'

(FOR STUDENTS OFFERED THE EXPRESS OR N(A) COURSE)

AL 7 or 8 in Standard MTL

or

AL B or C in Foundation MTL

- Schools have discretion to offer MTL 'B' to students who face exceptional difficulty with MTL but do not meet the eligibility criteria at Secondary 1 based on PSLE results.
- As students progress in secondary school, they may also take up MTL 'B' if they are assessed to be suitable by their schools.

SUBJECT-BASED BANDING (SECONDARY) [SBB (SEC)] ELIGIBILITY CRITERIA

FSBB PROVIDES STUDENTS POSTED TO POSTING GROUP G1 AND G2 WITH **GREATER FLEXIBILITY** TO TAKE VARIOUS SUBJECTS AT A MORE DEMANDING LEVEL BASED ON THEIR SUBJECT-SPECIFIC STRENGTHS.

UNDER THE NEW PSLE SCORING SYSTEM, THE SBB (SEC) ELIGIBILITY CRITERIA IS AS FOLLOWS:

FOR STUDENTS POSTED TO THE POSTING GROUPS G2 OR G1	
PSLE SUBJECT GRADE	OPTION TO TAKE SUBJECT AT
AL 5 or better in a Standard level subject	G3 level
AL 6 or better in a Standard level subject <u>OR</u> AL A in a Foundation level subject	G2 level

AS STUDENTS PROGRESS IN SECONDARY SCHOOL, THEY CONTINUE TO HAVE OPPORTUNITIES AT VARIOUS JUNCTURES TO TAKE SUBJECTS AT MORE DEMANDING LEVELS BASED ON THEIR PERFORMANCE IN SCHOOL.

STUDENTS POSTED TO THE EXPRESS COURSE WILL TAKE ALL THEIR SUBJECTS AT THE EXPRESS LEVEL.

SUBJECT-BASED BANDING (SECONDARY) [SBB (SEC)] ELIGIBILITY CRITERIA

G2 Level
English

G3 Level
Math

G2 Level
Mother
Tongue
G2 Level
Science

EXAMPLE:

ENGLISH LANGUAGE	AL6
MOTHER TONGUE LANGUAGE	AL6
MATHEMATICS	AL5
SCIENCE	AL6

PSLE SCORE: 23
Posting Group G2

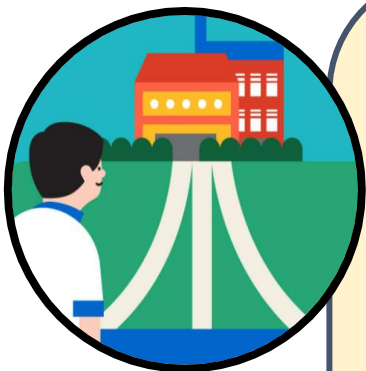


FULL SUBJECT-BASED BANDING (FULL SBB)

FULL SUBJECT-BASED BANDING FSBB WILL BE IMPLEMENTED IN SECONDARY SCHOOLS IN 2024

THIS IS IN LINE WITH THE CHANGES TO PSLE SCORING TO RECOGNISE EACH STUDENT'S OWN LEVEL OF ACHIEVEMENT AND ENCOURAGE THEM TO CHOOSE SECONDARY SCHOOLS THAT FIT THEIR STRENGTHS AND INTERESTS.

FULL SBB AIMS TO FURTHER NURTURE THE JOY OF LEARNING AND DEVELOP MULTIPLE PATHWAYS TO CATER TO THE DIFFERENT STUDENT PROFILES. THROUGH FULL SBB, WE WANT STUDENTS TO:



- have greater ownership of their education, and learn each subject at the level that best caters to their overall strengths, interests and learning needs, and
- have more opportunities to interact with friends of different strengths and interests.
- not be held back by negative self-concepts and labelling.
- have increased access to post-sec pathways, while having strong fundamentals in their subjects so that they are able to thrive in the pathway they choose.

FULL SUBJECT-BASED BANDING (FULL SBB)

THE FOLLOWING ARE CHANGES THAT STUDENTS WILL EXPERIENCE FROM FULL SBB:

- Removal of Express, N(A) and N(T) courses
- Mixed form classes
- Common Curriculum subjects
- Offering subjects at a more demanding level, including Humanities subjects
- Common National Examinations
- Post-secondary Admissions



(More information will be made available at a later date.)

FULL SUBJECT-BASED BANDING (FULL SBB) TIMELINE

Link to PSLE-FSBB Microsite



<https://go.gov.sg/pslefsbb>



2020

Full SBB pilot commenced in 28 secondary schools. Feedback from pilot schools has been positive.



2022

Full SBB will continue to be rolled out to more schools in phases.



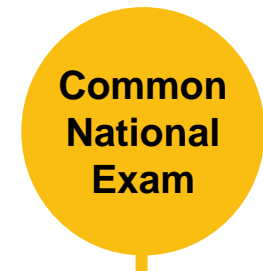
2023



2024

From 2024,

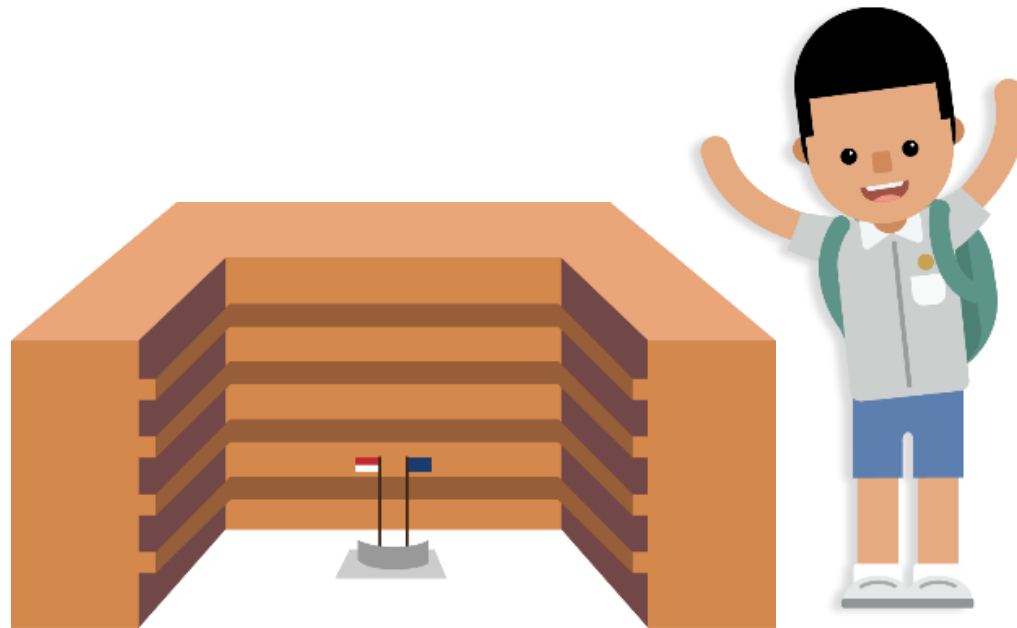
- There will no longer be Express, N(A) and N(T) courses.
- Students will be able to study subjects at different levels that suit their interests, strengths and learning needs.



2027

From 2027, students will sit for the common national examination and receive a new national certification with subjects at different levels.

HOW THE S1 POSTING SYSTEM WORKS



CHOICE ORDER OF SCHOOLS MATTERS MORE

- Students continue to have **six choices** in selecting their secondary schools.
- Similar to past years, students continue to be posted to a secondary school based on academic merit, i.e., PSLE Score, and their school choice order.
- If there are two or more students with the same PSLE Score vying for the last remaining place(s) in a school, the following tie-breakers will be used in the following order:

1. CITIZENSHIP

2. CHOICE ORDER OF SCHOOLS (New tie-breaker from 2021 onwards)

3. COMPUTERISED BALLOTING

- The new tie-breaker based on school choice order recognises the different considerations that families have in making school choices.



Tie-breakers

in the new S1 Posting System


Tie-breakers are used only if there are two or more students with the same PSLE Score vying for the last available place(s) in a school.

Here's a simplified example.

5 students are vying for the last places in the schools of their choice.


Jane
Singapore Citizen
16 pts

SCHOOL CHOICES:
1) Sch A
2) Sch ...
3) Sch ...
4) Sch ...




Bryan
Singapore Citizen
20 pts

SCHOOL CHOICES:
1) Sch B
2) Sch ...
3) Sch ...
4) Sch ...




Mary
Singapore Citizen
20 pts

SCHOOL CHOICES:
1) Sch A
2) Sch B
3) Sch C
4) Sch ...




Alan
Permanent Resident
20 pts

SCHOOL CHOICES:
1) Sch A
2) Sch B
3) Sch D
4) Sch ...




Rina
Permanent Resident
20 pts

SCHOOL CHOICES:
1) Sch A
2) Sch B
3) Sch D
4) Sch E



➤ Students with better scores will be posted first

Jane has a better PSLE score. She will be posted first, to **School A**.





Bryan, Mary, Alan and Rina have the same score.

As Jane has taken the last available place in School A, Bryan, Mary, Alan and Rina will vie for the last available place in their next choice, **School B**.

➤ Tie-breaker #1: Citizenship


Bryan and Mary are Singapore Citizens. They will have priority to enter **School B**.


Alan and Rina will be tie-broken out as they are Permanent Residents. They will be considered for their next choice, **School D**.

➤ Tie-breaker #2: Choice order of schools

Because Bryan ranked School B higher than Mary, he will be posted to **School B**.




Since Bryan has taken the last place in School B, Mary will be posted to **School C**.




Alan and Rina have both ranked School D as their third choice. They will go through computerised balloting to vie for the last remaining place in **School D**.

➤ Tie-breaker #3: Computerised balloting

Through computerised balloting, Alan is posted to **School D**.



Since Alan has taken the last place in School D, Rina will be posted to her fourth choice, **School E**.

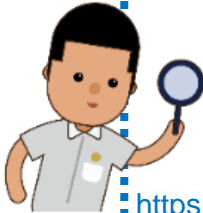




PSLE SCORE RANGES FOR INDIVIDUAL SECONDARY SCHOOLS



PSLE SCORE RANGES FOR ALL SECONDARY SCHOOLS

- Use the PSLE Score ranges as a reference alongside other important factors, such as the school's distinctive programmes, Co-Curricular Activities (CCA), culture, ethos, and proximity to home when shortlisting school choices that would best fit a student's educational needs.
- The 2022 PSLE Score ranges for individual secondary schools are available for your reference on <https://moe.gov.sg/schoolfinder> and <https://go.gov.sg/exploreschools>. They reflect the PSLE scores of the student posted into these schools at the 2022 S1 Posting Exercise.
- A school's PSLE Score range (including Cut-Off-Point) for a particular year is not pre-determined before the posting, and may vary from year to year, depending on the cohort's PSLE results and their school choices in that year's S1 Posting Exercise.

SchoolFinder Tool	MySkillsFuture Student Portal (Primary)
  https://www.moe.gov.sg/schoolfinder	 https://go.gov.sg/exploreschools

PSLE SCORE RANGES FOR INDIVIDUAL SECONDARY SCHOOLS

The PSLE Score range refers to the PSLE Score of the first and last student admitted to a particular school in the previous year via the S1 Posting Exercise. This shows the range of student profiles who enter each school.

Example

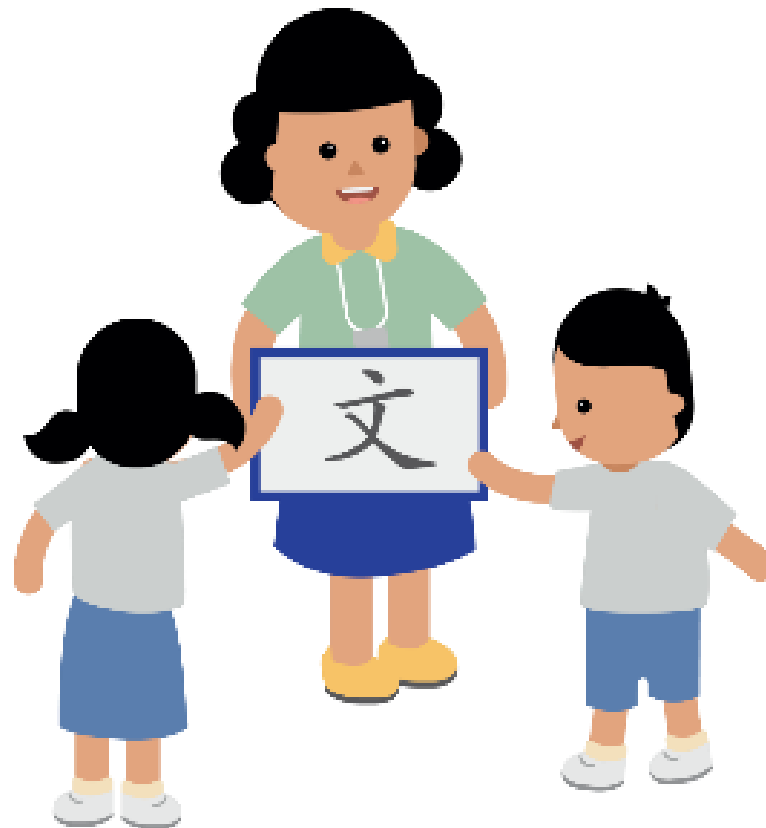
XX Secondary School
PSLE Score range of 2021

Express	15 - 20
Normal (Academic)	21 - 24
Normal (Technical)	25 - 28

PSLE Score of the first student posted into the school in the respective courses

PSLE Score of the last student posted into the school in the respective courses [i.e., the school's Cut-Off Point (COP)]







USE OF HIGHER CHINESE LANGUAGE (HCL) FOR ADMISSION INTO SPECIAL ASSISTANCE PLAN (SAP) SCHOOLS



HCL POSTING ADVANTAGE FOR ENTRY TO SAP SCHOOLS WILL CONTINUE

Students who obtained a Distinction/Merit/Pass for HCL at the PSLE and an overall PSLE Score of 14 or better will receive a posting advantage when applying to SAP schools.

Students will be considered for admission to SAP schools in the following order:

1st		7	NO HCL	Students with better PSLE Scores will be posted first, even if they did not take HCL
2nd		8	DISTINCTION	
3rd		8	MERIT	Amongst students with the same PSLE Score, those with better HCL grades will be posted first
4th		8	PASS	
5th		8	NO HCL	
6th		9	DISTINCTION	

- Students' HCL results are denoted as 'D' (Distinction), 'M' (Merit) or 'P' (Pass).
- Students who obtain (i) a Distinction / Merit / Pass in HCL and (ii) a PSLE Score of 14 or better are eligible for posting advantage to SAP schools.
- Students are ranked taking into account their performance in HCL.
- This posting advantage applies before the tie-breakers for S1 Posting.

EXAMPLE OF AN SAP SCHOOL'S PSLE SCORE RANGE

While students need not take HCL to enter SAP schools, students who pass HCL receive a posting advantage for admission. To reflect this, the PSLE Score ranges of SAP schools include the HCL grades of the first and last student admitted in the previous year via S1 Posting.

Example

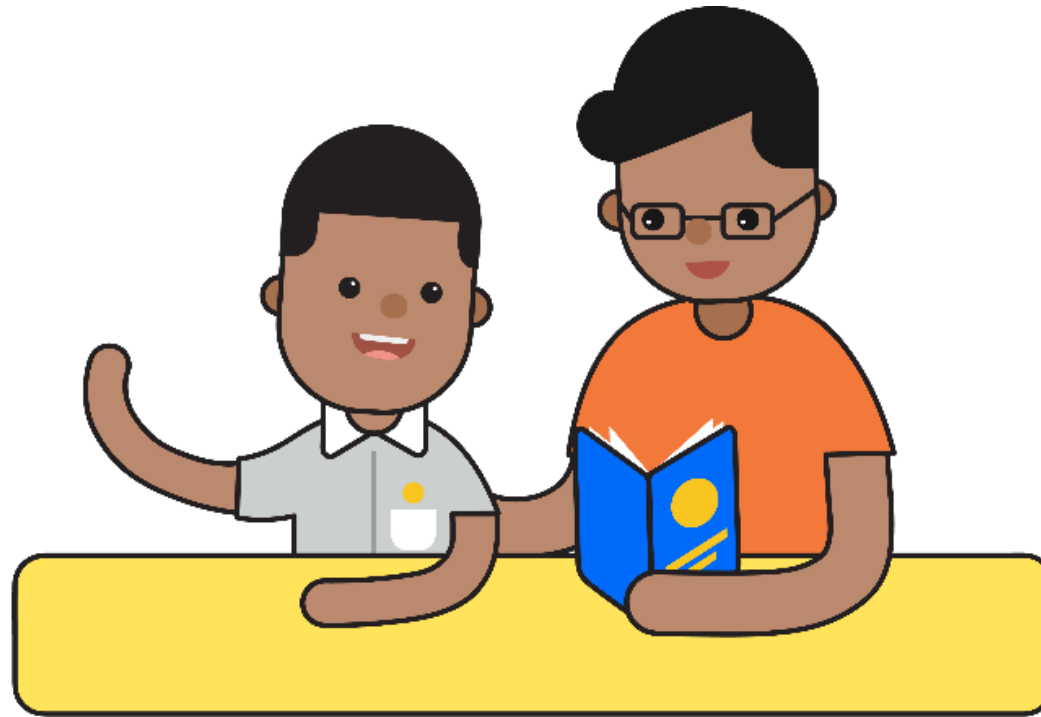
XX Secondary School
PSLE Score range of 2021

Express	5 (D) – 12 (P)
Normal (Academic)	
Normal (Technical)	

PSLE Score and HCL grade of the first student posted into the school in the Express course

PSLE Score and HCL grade of the last student posted into the school in the Express course [i.e. the school's Cut-Off Point (COP)]

CHOOSING SUITABLE SECONDARY SCHOOLS WITH YOUR CHILD

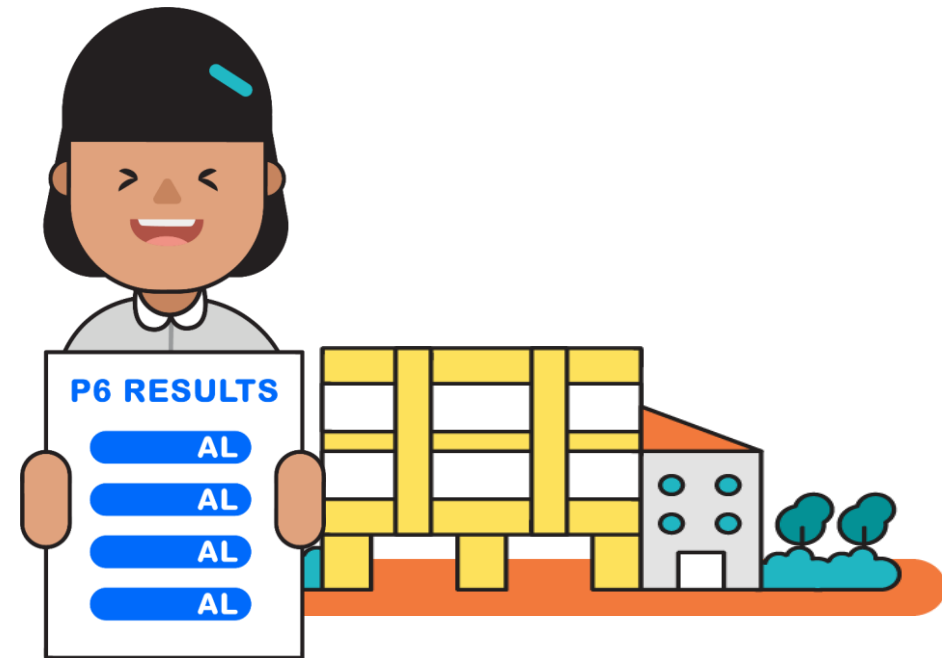


SCHOOL CHOICE JOURNEY

- The PSLE Score ranges are a **useful reference point** for parents and students to consider secondary schools.
- Use this information, together with other **important factors** such as the secondary schools' distinctive programmes, CCAs, ethos and cultures, to shortlist schools that would best fit the educational needs of the student.
- If your child has specific talents and strengths beyond the PSLE (e.g. areas such as sports, performing arts and leadership), consider the **Direct School Admission-Secondary (DSA-Sec)** as an alternative admission pathway to access secondary schools that have talent development programmes in these areas.



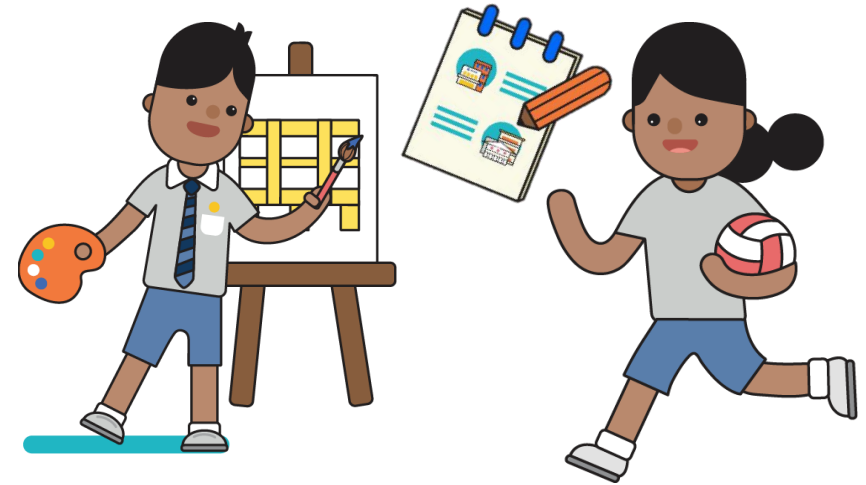
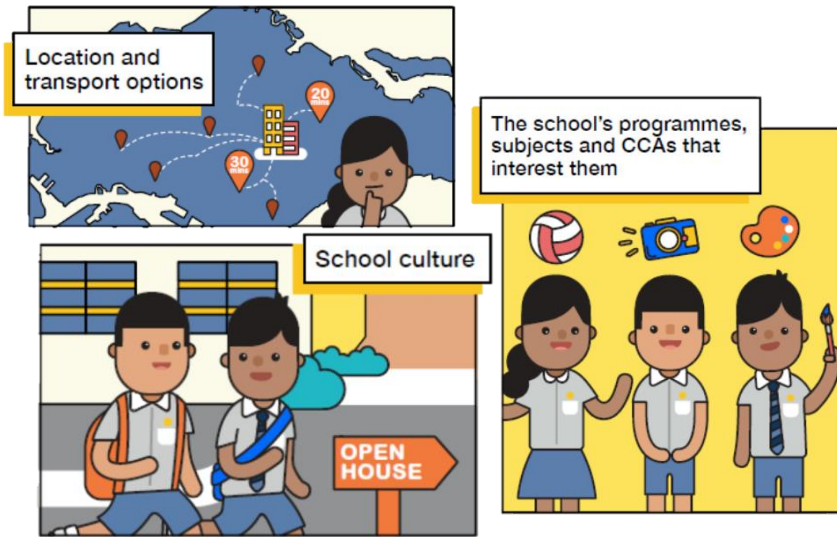
PREPARING FOR THE S1 POSTING EXERCISE



Use all 6 options with a range of Cut-off Points as this will increase your child's chances of being posted to a school of their choice.

Take reference from schools' PSLE Score ranges, which serves as a guide for you and your child to shortlist school choices. Consider at least 2-3 schools where your child's PSLE Score is better than the school's Cut-off Point.

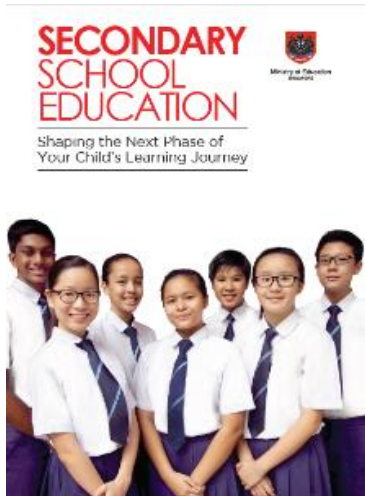
PREPARING FOR THE S1 POSTING EXERCISE



Shortlist schools that offer programmes that cater to the your child's strengths and interests, and that provide suitable learning environments.

Rank your child's preferred school higher in the school choice order. This will increase your child's chances of being posted to that school, if tie-breakers are required.

PREPARING FOR THE S1 POSTING EXERCISE



- Release of PSLE results
- Submission of Secondary 1 Option Form



- Release of S1 Posting results

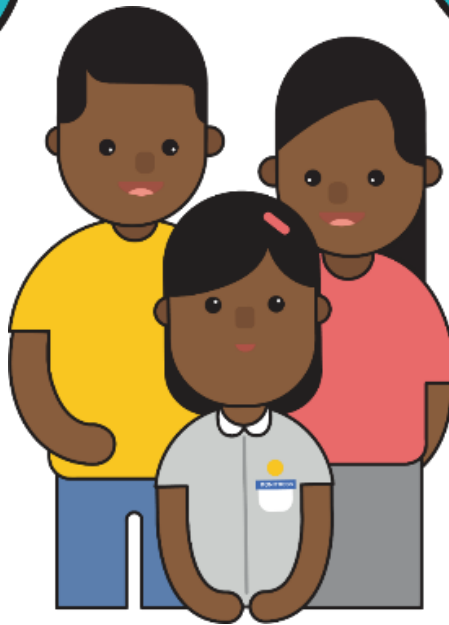


TIPS FOR PARENTS!

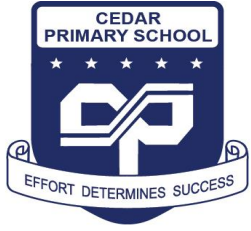
Be open and flexible when discussing your child's preferences, needs and choices.

Manage your own expectations and do not project these expectations onto your child.

Have regular conversations with your child to understand more about his/her interests and aspirations.



Affirm your child and offer support when he/she shares his/her plans with you.



**What do you think
are your children's
aspiration/s?**

VOICES of P6 STUDENTS

To the future...

ASPIRATIONS

What do you want to be when you grow up?
What kind of person do you want to be when you grow up?



A GOOD PERSON

HELPFUL



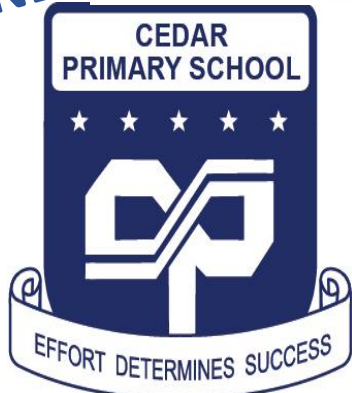
DILIGENT

KIND

HAPPY



RESPONSIBLE

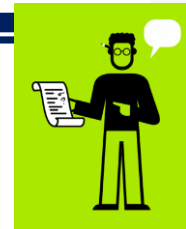


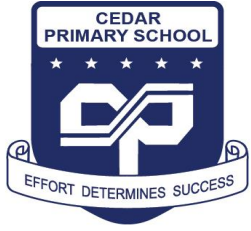
GENEROUS

POSITIVE



CREATIVE





What do you think are your children's Concerns, Worries and Sources of Stress?



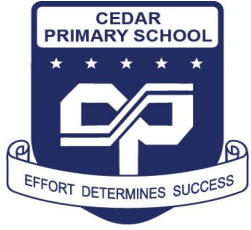
VOICES of P6 STUDENTS

To the present....

CONCERNS, WORRIES



**What are your Concerns, Worries
and sources of Stress?**



CONCERNS & WORRIES

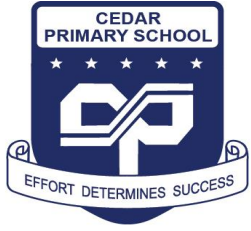
VOICES of P6 STUDENTS

School Values: Kindness, Integrity, Resilience, Responsibility, Creativity



PSLE

PARENTS' EXPECTATIONS
TEACHERS' EXPECTATIONS
COVID-19 PANDEMIC
FRIENDSHIPS
FAMILY PROBLEMS
MY OWN EXPECTATIONS



SUPPORT/ HELP

VOICES of P6 STUDENTS

School Values: Kindness, Integrity, Resilience, Responsibility, Creativity

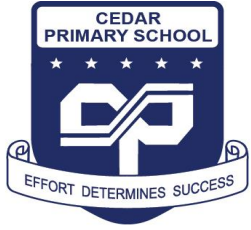




Building your Children's Resilience – 7Cs

School Values: Kindness, Integrity, Resilience, Responsibility, Creativity

- **Competence** is the ability or know-how to handle situation effectively
- **Confidence**, *the solid belief in one's own abilities, is rooted in competence*
- **Connection** - *close ties to family, friends, school, and community*
- **Character** – *a fundamental sense of right and wrong to ensure children are prepared to make wise choices*
- **Contribution** – *A powerful lesson when children realize that they can help to make the world a better place.*
- **Coping** *through a variety of healthy resilience strategies*
- **Control** – *When children realize they can control the outcomes of their decisions and actions, they're more likely to know that they have the ability to do what it takes to bounce back.*



Preparing for the academic rigour of P5 and PSLE – what parents can do

School Values: Kindness, Integrity, Resilience, Responsibility, Creativity

- **Create a study corner at home;** away from distracting things, to allow he/she to concentrate on this school work and revisions.
- **Develop a Study Plan with your child.** Ensure that there is a good balance of study, play and rest.
- **Supervise and provide support** for child's learning; encourage the child or praise him or her when appropriate.
- Encourage your child to **revise with classmates who are good role models** of learning .
- **Reinforce good study habits** and attitudes; for example by handing in homework on time and participating actively in class and to ask when in doubt.
- **Be mindful of the relative stress** arising from school homework and out-of-school activities, and help your child prioritise his/her time among these activities; and
- **Work in partnership with teachers** to support your child's learning and development.

FIND OUT MORE ON THE PSLE-FSBB MICROSITE!



<https://go.gov.sg/pslefsbb>



OTHER RESOURCES

1 SchoolFinder Tool



<https://go.gov.sg/secschoolfinder>

2 "Welcome to Secondary School" video



<https://go.gov.sg/welcome-to-secondary-school>

3 Secondary School Education Booklet



<https://go.gov.sg/psle-sec-sch-brochure>

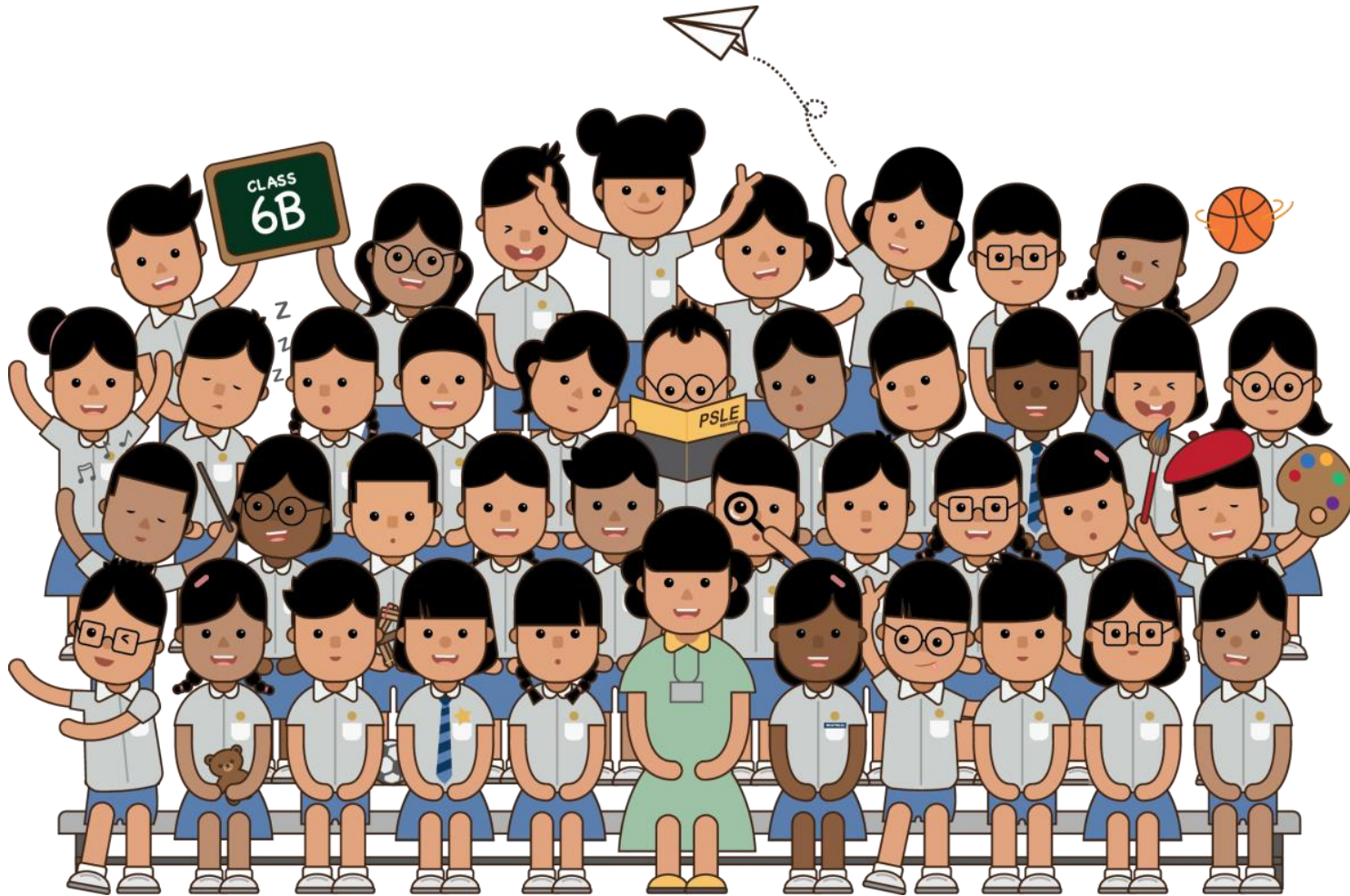
4 ECG Parent Guide



<https://go.gov.sg/parent-guide>

Be **P.S.L.E.**

Parents who **S**how **L**ove and **E**ncouragement



Nature is painting for us, day after day, pictures of infinite beauty if only we have the eyes to see them.

- John Ruskin

Thank You